

Duration, period and location of the course

The course is given once every two years and lasts for 3 weeks, fulltime (120 credit hours – 5 EC). The next course will be given:

January 9 – 29, 2012

Lectures and practicals will be given at the NCB Naturalis (National Herbarium of the Netherlands), Van Steenis Building, Einsteinweg 2, Leiden, The Netherlands. This location is c. 15 minutes walking distance from Leiden Central Station.

Costs

The costs of the course are 25 Euro (syllabus) for Biology students of Leiden University, of NCB Naturalis, and of the Dutch Research School Biodiversity, 220 Euro for other students at Dutch Universities, and 660 Euro for others (costs for accommodation and air fare are not included).

Accommodation

Information on accommodation can be obtained from the following websites:

www.universityguesthouse.leidenuniv.nl

www.booking.com/Leiden

www.hotels.nl/leiden

Exam

The course will end with a recognition exam. The participants will be expected to identify 30 selected collections to the family level. All participants who pass the exam will receive a certificate of the Dutch Research School Biodiversity.



More information and subscription

The number of participants is limited to a maximum of 25 due to the limited amount of practical material.

For more information please contact:

Dr. Marco Roos (roos@nhn.leidenuniv.nl) or

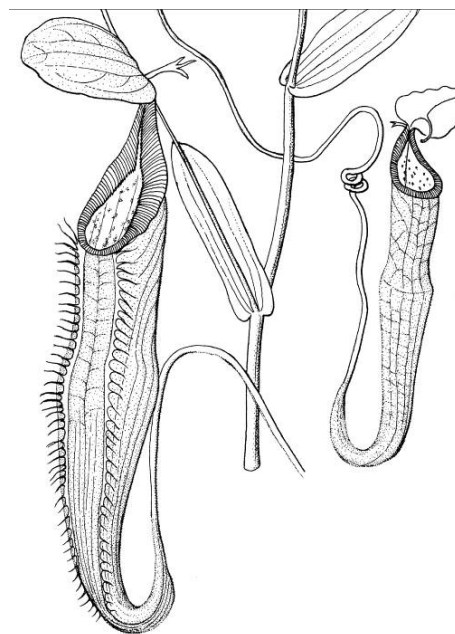
Dr. Tinde van Andel (andel@nhn.leidenuniv.nl)

Netherlands Centre for Biodiversity Naturalis (section NHN), Leiden University, Postbus 9514, 2300 RA Leiden, The Netherlands; Fax: 00-31-71-5273522
www.nationaalherbarium.nl

Please send your application for admittance before December 14, 2011, to the NHN secretary mrs Hanneke de Wolf (dewolf@nhn.leidenuniv.nl).

Course on Tropical Plant Families

with emphasis on Non Timber Forest
Products



January 9 – 29, 2012

NCB **naturalis**

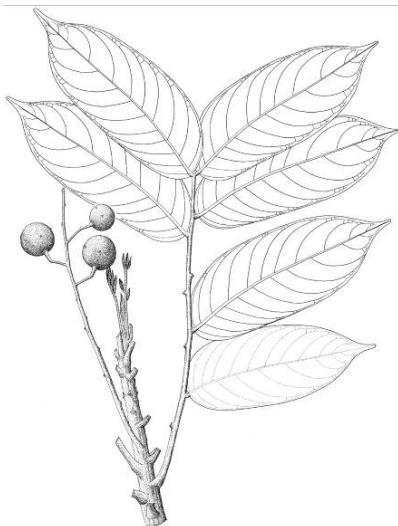
de hortus
Hortus Botanicus Amsterdam - anno 1638

Hortus
botanicus

LEIDEN

 Nationaal Herbarium Nederland

This folder is to inform you about the 'Plant Families of the Tropics' course at the Netherlands Center for Biodiversity Naturalis. It provides information for biologists and interested persons without a botanical background about the program, data, costs, exam and contact persons.



Why a course on tropical plant families?

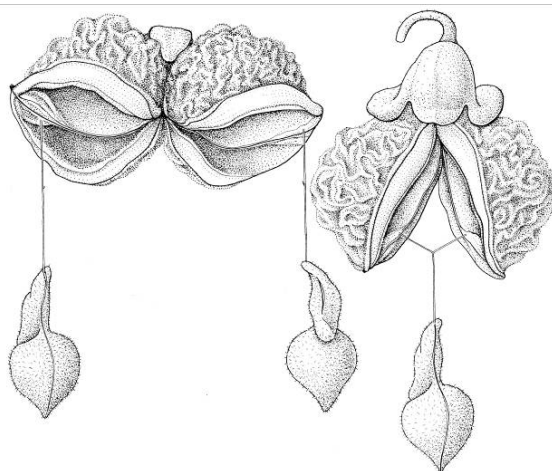
The tropics comprise a number of hotspots of global biodiversity: together they contain more than two third of vascular plant species worldwide with a density 10 times higher than the European flora. The tropics are home to many well known and economically important plant taxa, like yam, nutmeg, rattan, bananas, rambutan, meranti and cocoa. The botanical diversity of tropics is being documented in the NCB Naturalis in international projects, like Flora Malesiana, Flora of the Guianas and the Flore du Gabon. One of the aims of the NCB Naturalis is the knowledge transfer of plant diversity. That is why this course has been set up.

Target group

The recognition of many plant taxa in the field is often problematic, i.e. during collection expeditions, when doing ecological inventories, for studies on animal behavior, ethnobotanical research and for pollination and dispersal studies. Species diversity is high, only few plants are flowering and good floras are often not yet available.

This course is initiated for undergraduate and postgraduate students interested in the botanical wealth of the tropics. You will learn how to make good plant collections, how to describe field characters and how to recognize some of the important plant families. You can get help with the identification of previously collected material too.

At the beginning of the course the necessary botanical terms will be explained. Therefore, anthropologists and environmentalists, as well as biologists will also be able to follow the course. If foreign participants are present, the course will be given in English.



Program

The participants will learn to recognize a selection of economically and ecologically important plant families with the help of generative (flower and fruit) and vegetative (leaf and bark) characters. Generally, two to three plant families will be treated per day. Specialists working at the NCB Naturalis will give lectures with ample illustrations about plant families of that day and some important genera. In addition to the traditional Floras, participants will also learn to use internet keys and several CDROMs (inter-active keys).

During the practical the participants will be able to examine living, herbarium and alcohol preserved material. During excursions to the tropical greenhouses of the Leiden and Utrecht botanical gardens attention will be paid to collection techniques and field characteristics.